



*Blinds with people in mind*

**BANLIGHT DUO FR**  
Vertical And Roller Blind Fabric Specification

**BANLIGHT DUO FR**

Vertical And Roller Blind Fabric Specification

**KEY FEATURES:**

- Fabric composition:** 100% Polyester
- Fire retardancy:** EN 13773 : 2003 Class 1; BS5867 - 2, Type B : 2008 for fire retardancy when tested in accordance with BS5438 : 1989
- Shading:** Block-out - Recommended for computer environments
- Moisture Resistance:** Acticide coated - suitable for moist conditions

**STANDARD SPECIFICATIONS:**

- Colour range:** 26
- Louvre widths available:** 89mm (3 1/2"); 127mm (5")
- Roller fabric width:** 200cm (78.5") nominal
- Typical fabric weight:** 330gsm (+/- 10)
- Fabric thickness:** 0.45mm - nominal
- Colourfast:** Conforms to BS5867 - 1 : 2004 for light fastness to Grade 6 minimum when tested in accordance with ISO 105 - B02 : 1999
- Care instructions:** Wipe with damp sponge; Do not wash; Do not tumble dry; Do not dry clean; Do not iron.

COLOUR	HEAT		LIGHT		S-C
	T	R	T	R	
Beige	0	62	0	61	0.33
Black	0	4	0	4	0.83
Blue	0	16	0	13	0.73
Cerise	0	13	0	30	0.77
Daffodil	0	56	0	61	0.38
Fuschia	0	19	0	38	0.70
Grape	0	18	0	32	0.71
Grey	0	40	0	41	0.52
Harvest	0	42	0	43	0.50
Hot Pink	0	26	0	32	0.64
Lt Blue	0	48	0	47	0.45
Lilac	0	63	0	62	0.32
Lime	0	58	0	56	0.36
Mint Green	0	40	0	42	0.52
Mulberry	0	32	0	11	0.59
Navy	0	9	0	6	0.79
Optic White	0	69	0	82	0.27
Pink	0	57	0	58	0.37
Pistachio	0	34	0	30	0.57
Silver	0	51	0	53	0.42
Sky Blue	0	36	0	38	0.56
Taupe	0	37	0	34	0.55
Turquoise	0	28	0	26	0.62
Tuscan Orange	0	33	0	36	0.58
Vanilla	0	61	0	72	0.34
Willow	0	69	0	83	0.27

**This data is based on:**  
Tests conducted using double glazed 6mm float glass with 12mm air space. Blinds are fully closed.

Shading Co-efficients are calculated for radiation at normal incidence. Standard U value is 2.75 W/M 2k = 0.49Btu/ft2hx°F.

**Important:** Performance data has been compiled with great care using the latest techniques. However, it is advisable to check actual suitability of fabrics for a particular application before use.

In line with our commitment to product development, specifications may be subject to change without notice.

Eclipse © 2012 MSC4534 Issue 1

T = % Transmitted : R = % Reflected : S-C = Shading Co-efficient. Shading Co-efficients are expressed as a decimal between 0 and 1. The lower the figure, the higher the shading efficiency of the blind.



# BANLIGHT DUO FR

Vertical And Roller Blind Fabric Specification



Beige



Black



Blue



Navy



Optic White



Pink



Cerise



Daffodil



Fuschia



Pistachio



Silver



Sky Blue



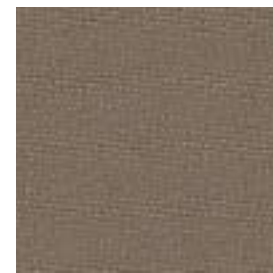
Grape



Grey



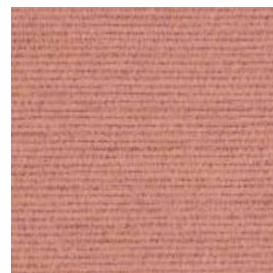
Harvest



Taupe



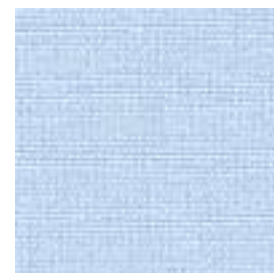
Turquoise



Tuscan Orange



Hot Pink



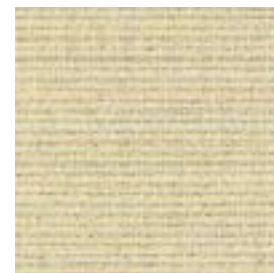
Light Blue



Lilac



Vanilla



Willow



Lime



Mint Green



Mulberry

